

Nursery Window Design

Concept :

In response to a site visit and conversations with Simon, it was decided that this window offers the potential for detailed colour design. The space is light and as such will not be adversely affected by a stained glass approach.

The walls to the left hand side (looking at the window from inside) are light and therefore receptive to reflections of colour. The design references the cathedral scale of the hall and aesthetic properties of the new building.

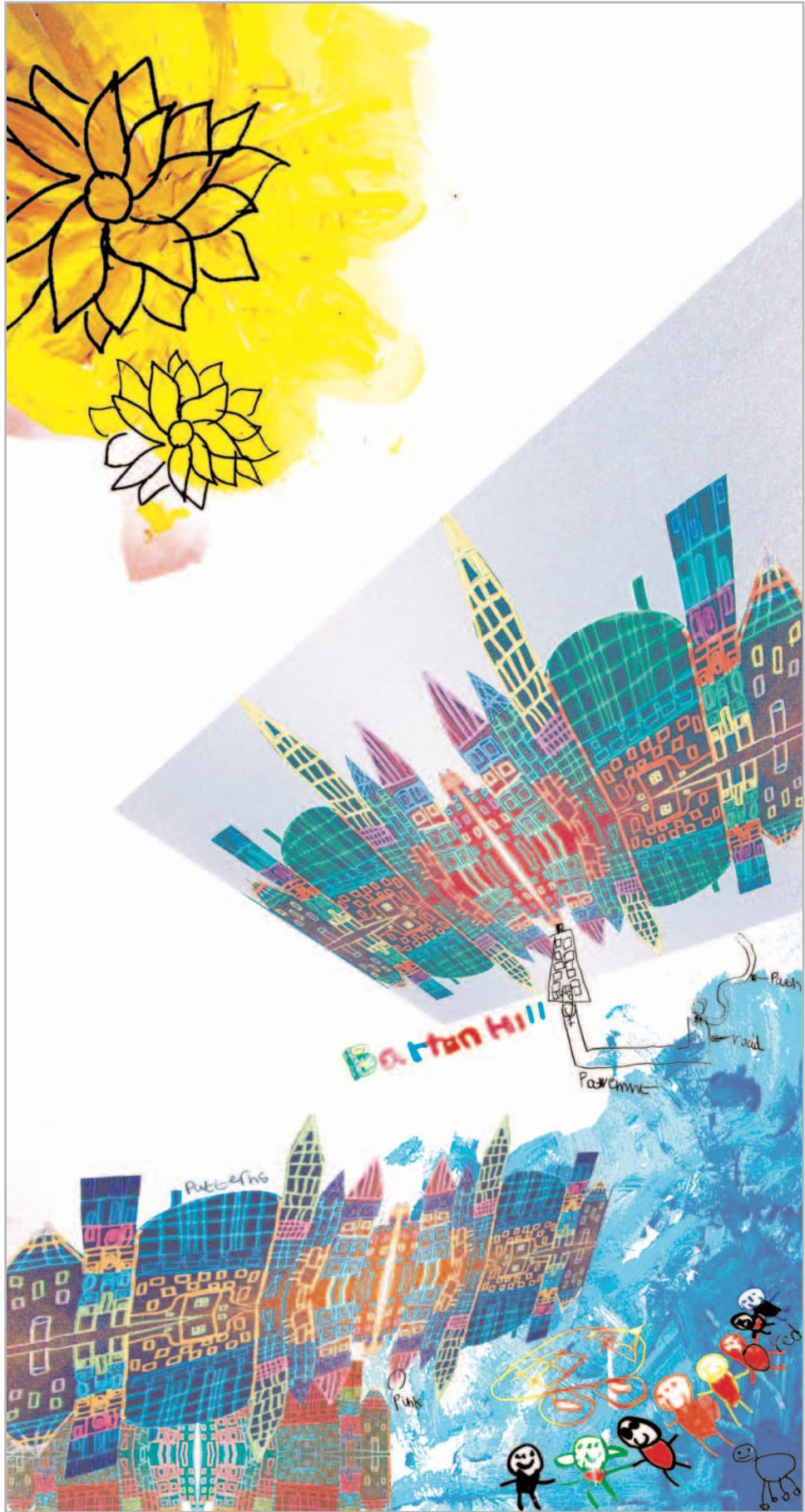
Influences include the John Piper Baptistry window of Coventry Cathedral and patterns used in Somali bead / craftwork. The images are entirely sourced from childrens artwork and have been reworked to create a composition that is both abstract & intricately patterned. The lower half of the window is designed with young children in mind - accessible for viewing the drawings & texts

The work will be produced as photographic film applied to the windows, the colours will be transparent (similar to glass). The areas in the design which are white will be clear.





' arnie lovejoy / mac dunnop 2007



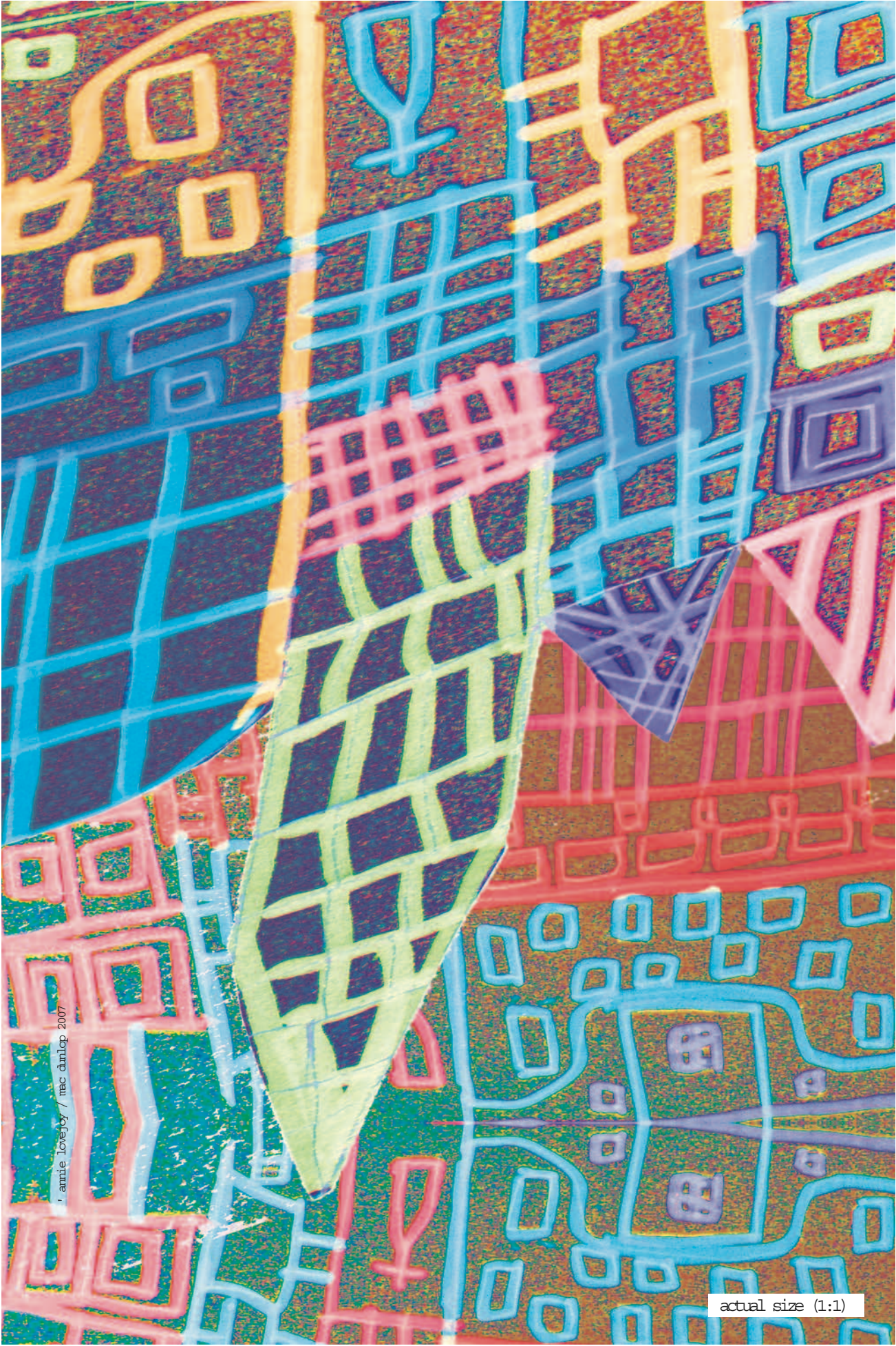
· annie lovesjoy / mac daniel 2007





' amie lovejoy / mac damlop 2007

actual size (1:1)



© amie lovejoy / mac dunlop 2007

actual size (1:1)